

Waterfront

Delivered to elite homes, businesses & airport VIP lounges

Issue 26



SISTER ACT
TOP OF THE RANGE
MUSIC MAN
LIFE IN THE FAST LANE
SANDY LANE

annacasa *Interiors*

Waterfront meets Anna Dodonova – the woman behind Anna Casa Interiors

In the classy setting of London's fashionable Chelsea, Anna Casa Interiors has become synonymous with the very best in forward-thinking and glamorous design. Launched in 2007, it is the culmination of the creative vision of owner and director Anna Dodonova. Anna wanted to bring a contemporary element to the Design Centre in Chelsea, creating a distinctive and stylish

showroom with Anna Casa Interiors.

"I am passionate about contemporary furniture and design. I felt I could bring something really different and unusual to the existing mix at Chelsea Harbour with my own showroom of top-end international contemporary brands," says Anna.

Her inspirational showroom showcases a stylish and luxurious home-furnishings





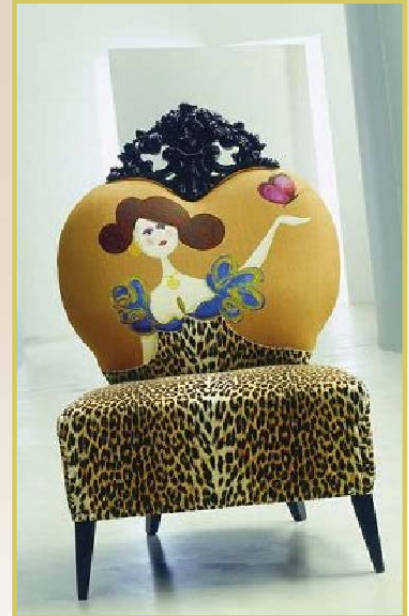
collection, emulating Anna's own style. All of the original furniture by famous designers such as Reflex Angelo, Creazioni, Gurian, Visionnaire and Mimo is chosen by Anna and are effectively and beautifully staged in this elegant shop, and many of the pieces are also exclusive to Anna Casa Interiors.

With furnishings ranging from sparkling chandeliers, timeless hand-blown Murano glass dining tables, luxurious beds and bespoke soft furnishings, Anna Casa is the epitome of luxury home-furnishing heaven.

Anna was born in Kiev in the Ukraine and the family moved to East Berlin, Germany, when she was just nine years old. During this period Berlin went through a growth spurt as a result of the fall of the Iron Curtain. The east of the divided city became known as a hub for the more bohemian side of the arts.

Creative from a young age, Anna studied drawing and painting at the University of St Petersburg. This intense period of tuition helped Anna identify her artistic strengths and she chose to go on to study graphic design and typography. She then trained as an interior designer in the UK, and worked here for several years, before setting up in the Chelsea Harbour Design Centre, with the support of Italian design brand, Reflex Angelo.

With a keen eye for detail, Anna has a distinguished approach to product design and is currently developing her first signature furniture range with Reflex called G Collection. Anna's first piece, the G table, is sold exclusively in the Anna Casa showroom, with more pieces still to follow during 2010. Anna would like to design more collections for Reflex Angelo and potentially other brands in the future.



Visit www.annacasa.net

